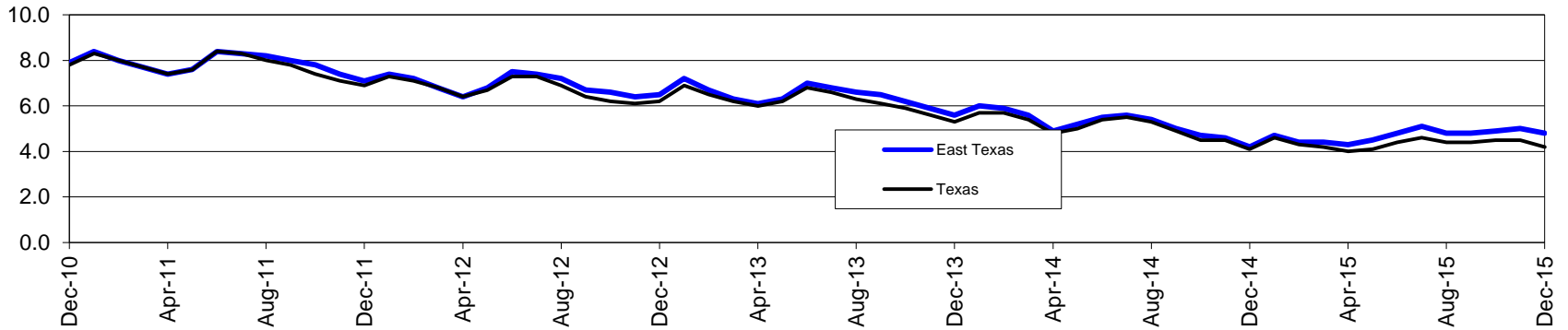


East Texas Workforce Development Area*

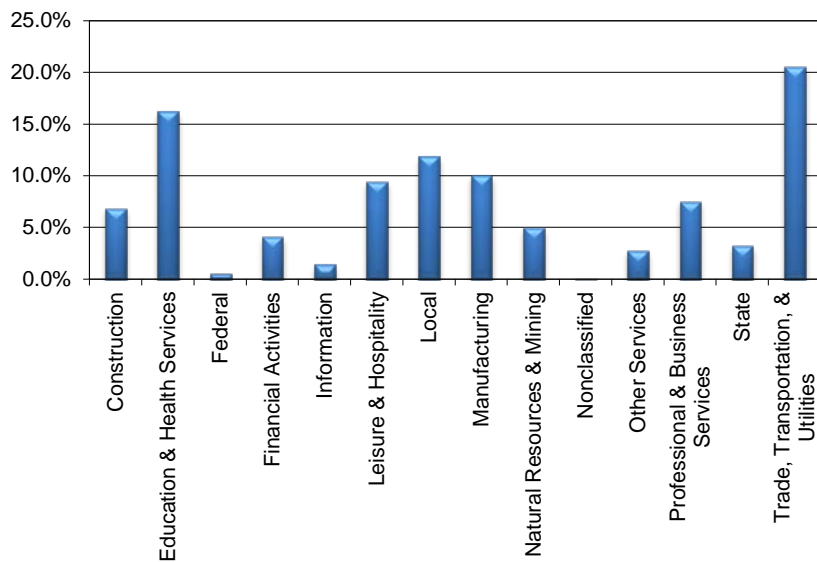
December 2015

East Texas WDA					Texas				
	CLF	Employed	Unemployed	Rate		CLF	Employed	Unemployed	Rate
Dec-15	380,913	362,791	18,122	4.8	Dec-15	13,077,390	12,522,151	555,239	4.2
Nov-15	381,945	362,986	18,959	5.0	Nov-15	13,099,997	12,506,534	593,463	4.5
Dec-14	388,038	371,913	16,125	4.2	Dec-14	13,152,203	12,612,084	540,119	4.1

Historical Unemployment Rates



East Texas WDA Industry Composition 2nd Quarter 2015



Total WDA Claims

Continued Claims for the Week of the 12th

	Dec-15	Nov-15	Dec-14	OTY
Continued	4,670	4,254	2,861	1,809

Texas Unemployment Insurance Claims

Continued Claims for the Week of the 12th

	Dec-15	Nov-15	Dec-14	OTY
Continued	138,530	134,003	106,015	32,515

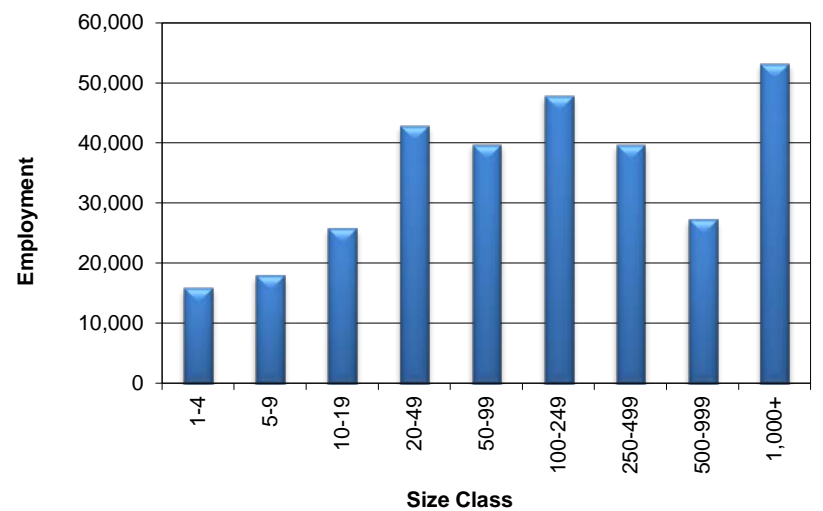
East Texas WDA Average Weekly Wage

	East Texas	Texas
2nd Quarter 2015	\$783.53	\$988.47
1st Quarter 2015	\$802.32	\$1,088.07
2nd Quarter 2014	\$787.19	\$973.16
Quarter Change	-\$18.79	-\$99.60
OTY Change	-\$3.66	\$15.31

NAICS Covered Employment Quarterly Data 2nd Quarter 2015

SUPER SECTOR	Employment	Change	
		Quarter	Year
Construction	21,364	2	-1,055
Education & Health Services	50,465	418	460
Federal	1,812	-3	-8
Financial Activities	12,969	94	221
Information	4,348	42	-82
Leisure & Hospitality	29,267	1,630	486
Local	36,930	354	231
Manufacturing	31,249	-124	1,596
Natural Resources & Mining	15,650	-2,104	-2,200
Nonclassified	82	28	31
Other Services	8,698	450	-103
Professional & Business Services	23,448	-310	-268
State	10,255	-57	78
Trade, Transportation, & Utilities	63,771	541	1,667
TOTAL	310,308	961	1,054

Size Class Employment Composition 2nd Quarter 2015



*Counties in WDA: Anderson, Camp, Cherokee, Gregg, Harrison, Henderson, Marion, Panola, Rains, Rusk, Smith, Upshur, Van Zandt, & Wood